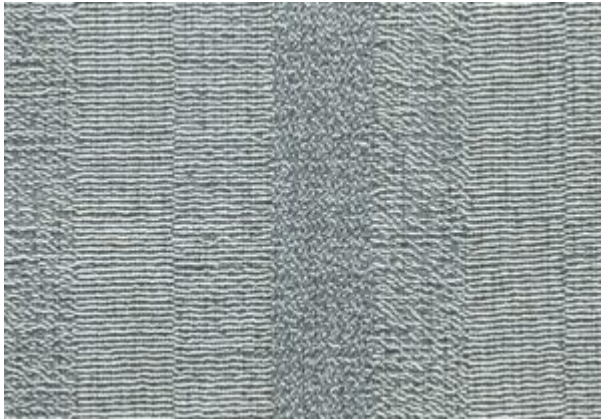




wallscape®
wallcovering



Silver Shine Wallcovering

Wallcovering Specification:

- Width: 52-54 inches
- Weight: 20oz. per Linear Yard
- Fabric Backed: Cotton Osnaburg
- ASTM E-84: Class A
- Repeat: Call Office
- Flame Spread: 25
- Smoke Developed: 25

Description:

Silver Shine Wallcovering is a cool reflective grey hue with a blue tint paired with a textured pattern of vertical and horizontal lines gives this wall covering a tranquil appeal. Its durable surface is ideal for workplace wall surfaces like corridors and hallways. Silver Shine graceful style has a matte shine and pleasing to the eye. This wallcovering is tested class A CCC-408D and ASTM E-84 tunnel tested and fire rated.

See wallcovering patterns that are in stock, we can ship within 24 hours. To determine the order quantity, divide the total square feet of all wall surfaces on your project, by 11. Wholesale pricing for textured wallpaper projects is available on quantities above 700 yards. Contact us to order samples at no charge. Custom colors are available on orders in excess of 1000 linear yards at an additional charge. A three-to-four-week lead time should be expected to fabricate larger orders. A two hundred square foot minimum applies to all in-stock orders, and shipping charges are additional. Corporate purchasing boards can take advantage of our free consultation services. We can assist property managers in developing a scope of work for commercial interior design. Wallcovering specifications are

available within each product category for architectural and interior design submittals. Installers are available within the USA; costs do vary upon location. Please send building lay-out plans to paul@wallscapeinc.com for budgeting and quantifying projects. Wallscape wallcoverings are washable and could sustain regular maintenance intervals. A warranty comes with Wallscape orders to ensure owner satisfaction. All products can be recycled at local facilities for re-purposed use. Please contact us to discuss your textured wallpaper project, or to answer any questions you may have please call 917.335.1123.

Commercial Wallcovering