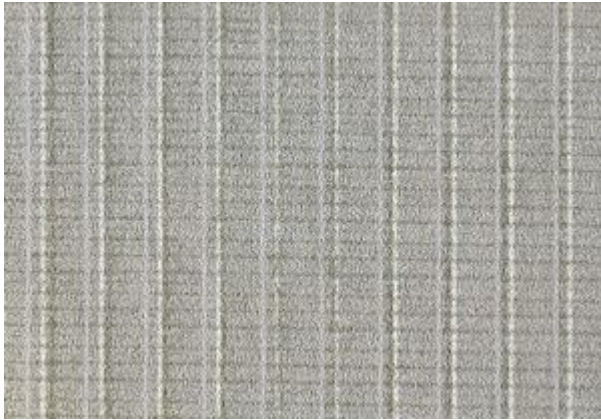




wallscape[®]
wallcovering



[Wallcovering Striped Weave Gray](#)

Wallcovering Specification:

- Width: 52-54 inches
- Weight: 20oz. per Linear Yard
- Fabric Backed: Cotton Osnaburg
- ASTM E-84: Class A
- Repeat: Call Office
- Flame Spread: 25
- Smoke Developed: 25

Description:

Striped Weave Gray wallcovering, this refined wallcovering has a professional feel with crisp white and grey vertical stripes. It has a matte shine with a suede texture. It has a pleasing feel, and it is ideal for commercial interiors.

This wall covering is washable and tested class A CCC-408D, and ASTM E-84 tunnel tested and fire rated. A good choice for darkly lit hallways, corridors, and lobbies. This product is washable, commercial rated, and able to withstand regular cleaning intervals for newly implemented safe touch zone spaces.

See wallcovering patterns that are in stock, we can ship within 24 hours. To determine the order quantity, divide the total square feet of all wall surfaces on your project, by 11. Wholesale pricing for textured wallpaper projects is available on quantities above 700 yards. Contact us to order samples at no charge. Custom colors are available on orders in excess of 1000 linear yards at an additional charge. A three-to-four-week lead time should be expected to fabricate larger orders. A two hundred square foot minimum applies to all in-stock orders, and shipping charges are additional. Corporate purchasing boards can take advantage of our free consultation services. We can assist property managers in

developing a scope of work for commercial interior design. Wallcovering specifications are available within each product category for architectural and interior design submittals. Installers are available within the USA; costs do vary upon location. Please send building lay-out plans to paul@wallscapeinc.com for budgeting and quantifying projects. Wallscape wallcoverings are washable and could sustain regular maintenance intervals. A warranty comes with Wallscape orders to ensure owner satisfaction. All products can be recycled at local facilities for re-purposed use. Please contact us to discuss your textured wallpaper project, or to answer any questions you may have please call 917.335.1123.

Commercial Wallcovering